



Squeegees

Squeegees are in the storage shed and available for the courts. **Do NOT** use any flat blade squeegee's! They are not allowed and may cause damage to the courts therefore voiding any warranty by the Construction company. No shovels, scrapers or any tools made of metal alloys.

Lost and Found Box

The lost and found box is emptied once a month on the first day of the month. Items will be photographed and an email sent via WSPC showing the items. If something belongs to you please claim it. Items not claimed by 1 week after posting will be donated.

Share the Courts

Court courtesy means not monopolizing the courts if there are players waiting to play. If you want to utilize a court exclusively then you will need to reserve a court and have the correct documentation. Rules are: 4 waiting: all 4 off and 4 waiting on. 2 waiting: 2 off and 2 waiting on, 1 waiting then one loser off

and 1 waiting on. Etc. Thanks in advance for your consideration.



2023 WSPC Christmas Party

A huge thank you to Tracy Baron for all her hard work and commitment as WSPC Social Director!

A special thanks to all our volunteers! Nothing could happen without our volunteers!

Volunteers: Linda Griffith, Mary Stine, Madonna Hayes, Jan Rogers, Jeff Smith, Rob Schoeber, Ed Roffey, Gordon Dirst, Lisa Gan, Sharon Becker, Brenda Furnace, Glenn Furnace, Jenny (Rich's wife), Cindy Krznarich, Pam Nicholls, Shari Vandervelde, Mark and Tammy Mancuso, Mary Spurr, Gene and Rita Clausen, Dave and Elise Lind, Tall Frank, Pat and Linda Droll, Karen Chaffee, John Stead, Shauna Nagy, Tracy Baron, Shawn and Linda Rash, Susie Cupp. Raffle: Mike Hill, Beth Klein, Sally Hall and Ted Crawford.

A wonderful time was had by all and the food, games and entertainment were all excellent!

How to Clean your Pickleball Paddle:

To clean your pickleball paddle the best method is to use a magic Eraser or a glass cleaner plus a microfiber cloth.

1. Magic Eraser: It is generally safe to use the Mr. Clean Magic Eraser to clean your pickleball paddles, but you should be careful not to scrub too hard or use it too frequently as it may strip away the finish on the paddle. It's also important to ensure the paddle is dry before using the Magic Eraser, as moisture can cause the foam material to break down more quickly. Before using the Magic Eraser, you may want to try using a soft, lint free cloth or sponge to wipe away any dirt or grime from the paddle. If the paddle is still dirty, you can use the magic eraser to scrub away any remaining stains gently.
2. Glass Cleaner Plus Microfiber Cloth: To clean your paddle, first, wipe down the paddle with a dry microfiber cloth to remove any loose dirt or debris. Then, mist a small amount of glass cleaner onto the cloth and gently wipe the paddle. Make sure to use a light touch and avoid scrubbing too hard, as this could cause the cleaner to penetrate too deeply and potentially damage the paddle. Once you have finished cleaning the paddle use the microfiber cloth again to remove any excess cleaner and allow it to dry completely before using it again.

Using a glass cleaner and microfiber cloth to clean pickleball paddles is generally safe. Still, you should be careful to not use too much cleaner or scrub too hard, as this could potentially damage the face of the paddle, especially if it has a textured surface.



How to Clean your Pickleball Paddle Continued:

There are several household cleaners that you can use to clean pickleball paddles safely, including:

1. Mild dish soap and water: Mix a small amount of mild dish soap with warm water and gently scrub the paddle with a soft cloth or sponge. Rinse with clean water and dry thoroughly.
2. White vinegar and water: Mix equal parts white vinegar and water and use a soft cloth or sponge to scrub the paddle gently. Rinse and dry thoroughly.
3. Baking soda and water: Mix a small amount of baking soda with water to create a paste, then use a soft cloth or sponge to scrub the paddle gently. Rinse and dry.
4. Rubbing alcohol: Dilute a small amount of rubbing alcohol with water and gently scrub the paddle with a soft damp cloth. Rinse and dry.

It is important to be gentle when cleaning your paddle and to avoid using harsh cleaning solutions or abrasive materials that could damage the paddle face.

Cleaning Carbon Fiber Paddles:

Carbon fiber pickleball paddles require a little extra care when cleaning, as they are more delicate than paddles made from other materials.

When cleaning paddles with honeycomb cores, it's important to be gentle and avoid applying too much pressure or using harsh cleaners, as these can potentially damage the core or cause the paddle to lose shape. Don't forget to wipe the tape or edge guard as well.

Bring your bag inside: Extremely cold weather can make your pickleball paddle brittle and increases the chances of your paddle breaking or cracking. On hot summer days, you will want to bring your pickleball paddle inside as well. On those scorching days, avoid laying your pickleball paddle on the court as the heat can make the pickleball paddle face softer.

***Test and try these methods at your own discretion. WSPC is not responsible for any damage from these methods.**



LP Pickleball Courts

We are all so thrilled to have the Lincoln Park courts playable! They will be finished in Spring 2024. In the mean time we would like to form a Blower Brigade.

We are in need of volunteers with blowers who can show up twice a month to blow off all the courts. This will need to be on a regular consistent schedule.

If you have a blower and are willing to be a part of the Elite Blower Brigade please email bcfurn@msn.com. We need you!

- Parks and Rec. has limited staff and therefore it behooves us all to pitch in to take care of our courts. I will be there helping too as I have already demonstrated by spending 3 days doing it by myself as well as sweeping off the sidewalks and picking up trash.
- We all need to be good stewards of our courts. If you see trash please pick it up and throw it away. This includes broken balls, bottles and tissues left behind. Whatever is brought in needs to be taken out by the person bringing it.
- Court Washers needed in the future after the courts are finished in the spring. If you are interested in being a part of that maintenance effort please let us know that too!

Tournament director Highlights: By Ed Roffey

**Western Slope Pickleball Club Tournament.
April 5, 6, & 7.**

Mark your calendars and save the date! The tournament will be held at Lincoln Park at our new 20 court facility. We will offer Men's and Women's Doubles as well as Mixed Doubles - all separated by both skill and age. We will also offer both singles and skinny singles. This tournament is FREE to all Western Slope Pickleball Club members! It is open to all players, however, non-club members will have to pay a membership fee. Look for the entry form to be available soon on the club website:

www.westernslopepickleball.com. Any questions contact Ed Roffey, tournament director at edroffey@hotmail.com or at 970-216-9321.

Ed's Pickleball Tutorials on You Tube:

The channel is called "Pickleball Quick Tips" I currently only have one video uploaded and that is the Welcome to Quick Tips... which explains what the channel is.

Each Sunday, I will upload a new video. I have 8 more videos ready to go.

Gordon has the Welcome video link in his queue ready to post on the website along with a thumbnail so folks can just click on the thumbnail and watch the video.

Thank you Ed for all your work in the making of these videos! Your commitment to the pickleball community is commendable and we are grateful for your commitment to Pickleball! BF.



USA Pickleball Association Significant Rule Changes for 2024

There are not many rule changes this year. Many of the changes are just in language used to make rules clearer or to eliminate rules that contradict any changes made. The significant rule changes for this year are as follows

Correcting Server, Receiver and Player Position Errors (Rule 4.B.9) Incorrect server/receiver or incorrect position fault has now been eliminated. In an officiated match, the referee will correct those player errors before calling the score. If a player/position error is identified after the rally has played out, the rally shall stand. If the referee or a player stops a rally in progress to **correctly** identify a player/position error, the rally shall be replayed. If a player stops a rally and **incorrectly** identifies a player/position error, it is a fault on the player who stopped the rally. If the referee stops a rally in progress and incorrectly identifies a player/position error, rally shall be replayed.

An unofficiated match would have the same rules as above, without adding the referee, of course. If an opponent recognizes a wrong server/receiver/position before the serve, they may advise the other team before the serve occurs.

Draping Net (2.C.6/11.L.5.b) If a ball goes over the net and (except on the serve) lands on a draping net, it is a replay in officiated and unofficiated play.

Catch or Carry Ball on the Paddle (7.L) Catching or carrying the ball on the paddle is now a fault, whether it is deliberate or not. (The definition of “Carry” – Hitting the ball in such a way that it does not bounce away from the paddle but is carried along on the face of the paddle.

Conceding a Rally (13.E.4/13.E.5)
 Rule 13.E.5 calls for a replay when a player overrules to their detriment a line judge’s ‘out’ call as ‘in.’ The player or team may now choose to concede the rally to their opponent if they determine they would have been unable to return the ‘in’ ball. Similarly, Rule 13.E.4 calls for a replay when the referee overturns a line judge’s ‘out’ call as ‘in’. The player or team who benefitted from the referee’s ruling may now choose to concede the rally to their,

Rule Changes Continued:

opponent if they determine they would have been unable to return the ‘in’ ball.

Medical Time-Outs (10.B.2.c) A player is now allowed to use available standard time-outs after the 15-minute medical time-out has expired.

Mini Singles Mini Singles (also called Skinny Singles) rules have now been incorporated into the Rulebook.

Approved Paddle List Always be sure your paddle is on the USA Pickleball Association approved paddle list at this link. <https://equipment.usapickleball.org/paddle-list/>

I’m always happy to answer any questions about the rules or officiating. Have fun! See you on our wonderful new courts.

Information Courtesy of Eileen Egloff. Our certified USA Official Referee/Referee trainer. Thanks Eileen!

.....
 *Please check our WSPC Website for information on club perks for our members.

*Please empty the water bottles or make sure the lids are secure prior to putting them into the lost and found box. The last time the box was emptied there was an inch of water in the bottom of it.

*Enjoy the Live View Web Camera on our WSPC Web. Page. In the future it will be a Membership Perk.



Presidents Message from Jeffrey Smith...



2023 was an eventful year on the outside and a lot of hard work on the inside by the dedicated members of our Board and the many volunteers from the club. The court expansion project, although incomplete, has turned out to be a huge boost to the playing experience for everyone who has ventured to Lincoln Park with a pickleball paddle since it opened. We are currently working with the City staff to resolve the injury hazard presented by the exposed fence tops. We are also discussing signage, court rules; protocols for court sharing; AED access and emergency procedures. The latest word from Parks & Rec. is the court project contractor has agreed to a deadline of next May to complete the courts. This will include redoing the surface paint and lines and installing the rest of the gates. They hope to get it done sooner as the work is dependent on when warm night temperatures return this spring.

It was great to see so many members enjoying themselves at the annual Holiday Party. As mentioned previously the efforts of our fabulous Director of Social Events, Tracy Baron, and her talented committee of volunteers made this our most delightful event to-date. A special thanks goes out to our raffle ticket volunteers for rousting up enough enthusiasm for tickets to double our previous years revenue to \$1300. This year's exceptional raffle prizes were donated by Komodo Pickleball (thanks Dave Milo), Paddletek (thanks Rich Garrett), Chipeta Pickleball (thanks Joe Toke and Tim Reeves – Wilson Golf Group), and The Bubble, indoor facility (Thanks Caleb Marquardt).

Help Wanted:

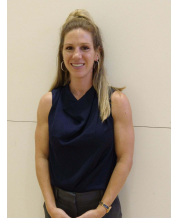
We are in search of a new Quarterly Newsletter writer. If you are interested please email Jeffery Smith at jasmithoregon@gmail.com.

Board of Directors...

Brenda Furnace, VP/PP/TD/Founder



Krystie Wooten, Secretary



Beth Klein, Treasurer, New Technology Assistant



Linda Griffith, Volunteer Coordinator



Tracy Baron, Social



Jan Rogers, Communications/Membership



Continued on Page #7...

We love our Sponsors!



Chris McGlade, AAMS*
Financial Advisor

631 24 1/2 Road Suite H
Grand Junction, CO 81505
Bus. 970-243-7105 Fax 888-855-8897
chris.mcglade@edwardjones.com
www.edwardjones.com/chris-mcglade

Edward Jones
MAKING SENSE OF INVESTING



Bank of Colorado

THE WAY BANKING SHOULD BE

Dan Meyer

Vice President-Commercial Lending

200 Grand Avenue
Grand Junction, Colorado 81501
www.bankofcolorado.com
NMLS ID #961413

Direct: (970) 263-2010
Bus: (970) 245-1600
Fax: (970) 245-9538
dan.meyer@bankofcolorado.com



Chris Kopanos
President

Phone : 970.241.2237
Cell : 970.261.8664

Screen Printing • Embroidery
Promotional Products

Over 20 Years in Business!

2695 Patterson Rd. Ste. 2-273, Grand Junction, CO 81506
sales@nexgenpromo.com www.nexgenpromo.com



Alecia Gordon, GRI

Broker Associate
Property Manager

Real Estate Professional

Ph: (970) 263-7250
Cell: (970) 260-2555
Email: Alecia@BuyGrandJunction.com
www.BuyGrandJunction.com

759 Horizon Drive, Unit B
Grand Junction, CO 81506-8737

Associated
Brokers &
Consultants, Inc.
REALTORS®



Lindsey Kelly
lindsey@insuranceoptionsonline.net
970.424.0493



Insurance Options, Inc.

Western Slope Pickle Ballers Have Options

Medicare Supplements
Medicare Advantage
Part D Prescription
Drug Plans
Home Care

Retirement Planning
401K Rollovers
Indexed Annuities
Life
Long Term Care

SERVING THE WESTERN SLOPE FOR OVER 15 YEARS
Call for an appointment today! 970.424.0493
www.insuranceoptionsonline.net

RRGJCO

Red Rock Auto Group Family of Dealerships



HONDA

(970) 299-9495

<https://www.redrockhonda.com/>



HYUNDAI

(970) 442-5295

<https://www.redrockhyundai.com/>



NISSAN

(970) 536-2043

<https://www.redrocknissan.com/>



GMC
(970) 800-2536
<https://www.redrockgmc.com/>



KIA
(970) 364-1943
<https://www.redrockkia.com/>



Guido Schulte
real estate

Guido Schulte ePRO Realtor
Office: 970-263-7777
Cell/Text: 970-250-1162
E-Mail: guido@guidos.com
Website: GJHomeStore.com



GJ Sales Group, LLC
817 Falcon Way, Suite 212
Grand Junction, CO 81506



KOMODO PICKLEBALL

Dave Milo
CEO/Owner

Office: 800-897-5015

davem@komodopickleball.com www.komodopickleball.com

The best places to shop is with our Sponsors! On our website, click on sponsor's business cards for more details. Meeting your needs every day!

**Welcome to our new Sponsor T-Mobile:
See our website for more information!!!!**



970-628-1024 - Store
303-475-6746 - Cell

Don Deimling
Play It Again Sports Grand Junction
2454 Hwy 6 & 50, Unit 111B
Grand Junction, CO 81505

Playitagainsportsgrandjunction@gmail.com
Playitagainsportsgrandjunction.com

Board of Directors Continued:



Rob Schoeber, Project Manager

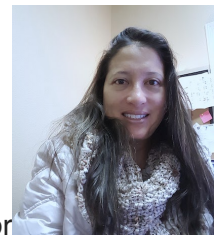


Ed Roffey, Tournaments



Anna Goetz, Drill Fest and

Outreach



Tracy Dvorak, Website Director



Gordon Dirst, Sponsorship Director and Technology Specialist

Thanks you again for your generous sponsorship. We hope that we will live up to our achievements of previous years.

Newsletter courtesy of Brenda Furnace

Thank you all for bringing your passion, intellect, insight, experience and resources to the table.